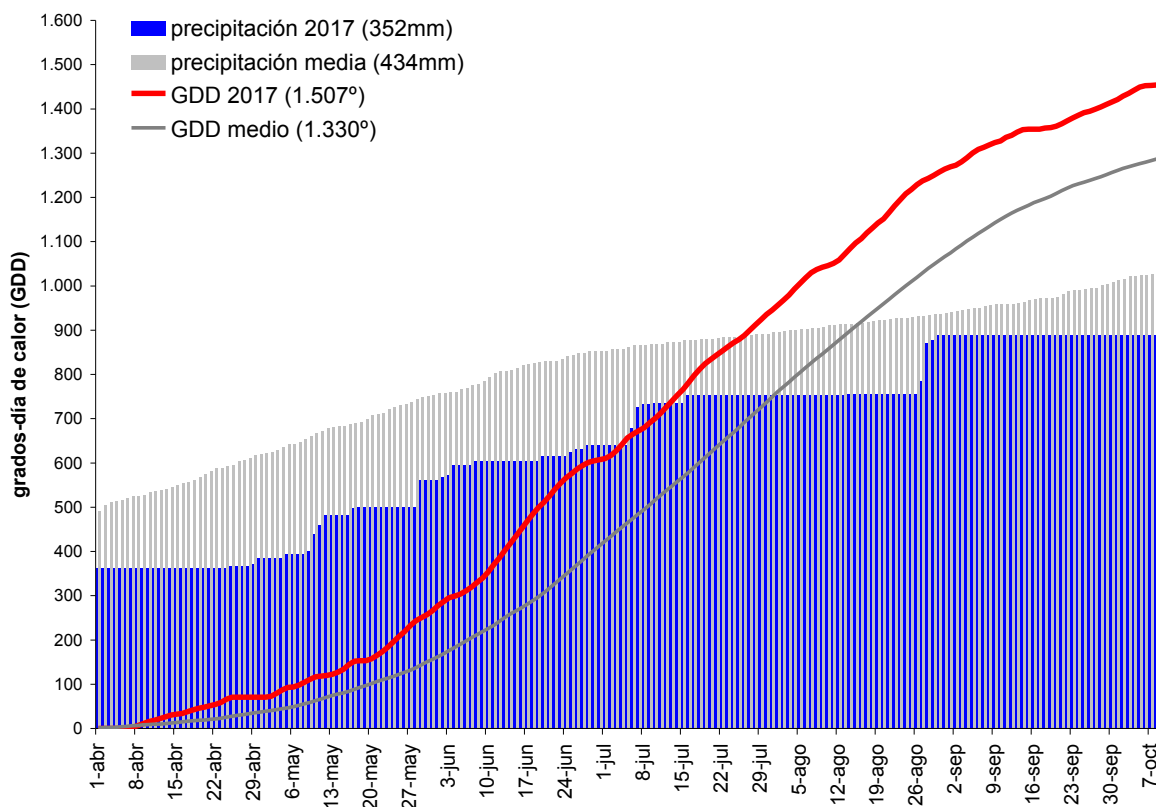


VINTAGE REPORT 2017

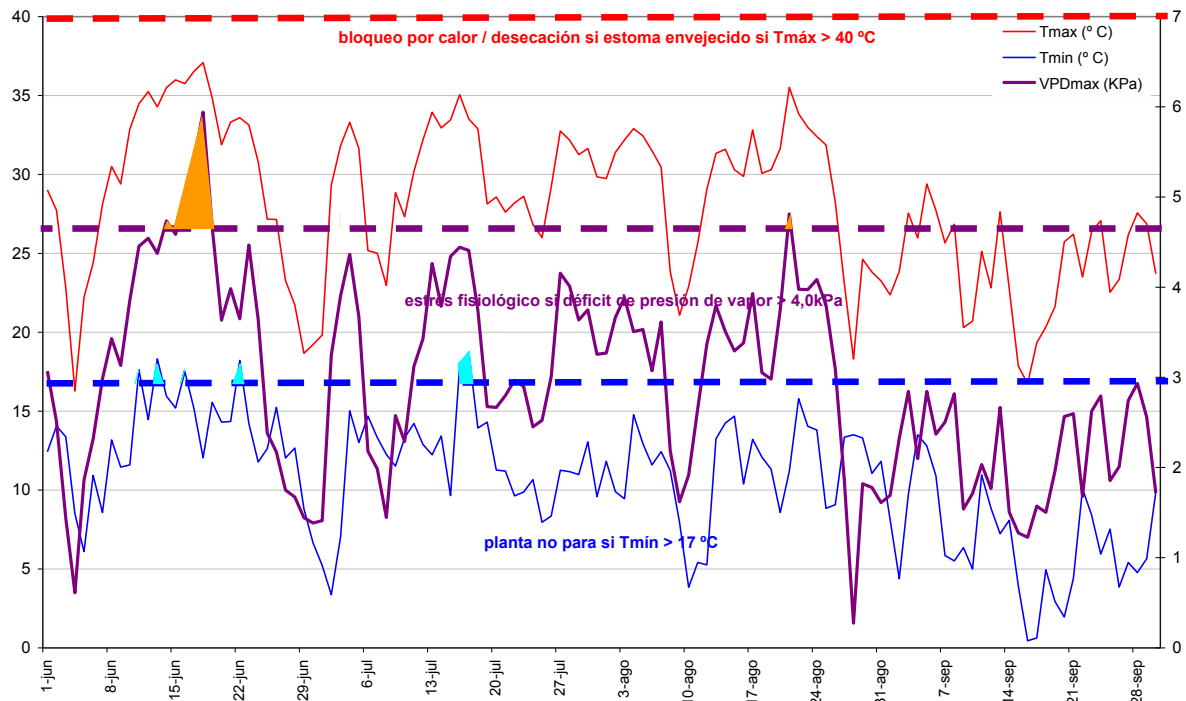


2017 was a warm and dry year.

At the end of the winter we noticed a lack in the subsoil water level. Spring was dry and the subsequent months of July and August were equally dry with strong rainfalls towards the end of summer. The autumn was warm and dry but registering normal temperatures.

If we look at the temperature chart throughout the year we see that the months of June and July were the warmest of 2017 leaving the other months with normal seasonal temperatures. Those two months of unrelenting heat ended up marking the record as a warm year as a whole.

The main shortcoming of 2017 was the frost that affected the entire Ribera del Duero on the night of the 28th of April. It was a winter frost, with a strong North wind that had cooled the atmosphere throughout the afternoon. The clear night reached a -6º below zero in practically all the slopes and valleys of the region. The day dawned with a strong sun and a change of warm wind, which enhanced the effect of the nightly frost.



The only peak of environmental stress occurred between the 15th and 20th of June. In the vines, most affected by the frost, the second regrowth took place under conditions of maximum environmental stress condition. To this stress was added a lack of water in the soil and the atmospheric dryness which caused an irregular growth and physiology of the vines.

The vines adapted to the environmental condition producing relatively small grapes and absorbing enough potassium from the soil. This led to an early harvest, ripe and great extraction of the aromas and low acidity. The harvest took place in the second half of September.

BODEGAS Y VIÑEDOS ALNARDO

In 2017 we have worked with 27 villages , harvesting 340000 Kilos . The grapes came from 841 small plots in all from 225ha . Average 0.27ha pr plot and an average yield of 1500 kg/ha (or under 10 hl /ha).

The harvest started the 19 of September in Villalvaro (Soria) and lasted around 10 days . Harvest finished 29 of September .

As was the case in rest of Ribera, the frost of 28th of April marked the year . We have continued to work with old suppliers but have also had to find new ones to compensate the lower production from each plot . The overall production is still lower than 2016, but we try to compensate with wine held back from the 2016 harvest . They will be offered in bottle later this year .

PSI 2017

Tinta del pais & garnacha
Production: 225.000 bottles